



INDOFINE Chemical Company, Inc.

121 Stryker Lane, Bldg. 30, Suite 1 • Hillsborough, NJ 08844 • U.S.A.

Phone: (908) 359-6778 • FAX: (908) 359-1179

website: www.indofinechemical.com

e-mail: chemical@indofinechemical.com

CERTIFICATE OF ANALYSIS

Catalog Number: 06-805

Product Name: LICOCHALCONE A

CAS Number: [58749-22-7]

Lot Number: 2208694

Chemical Formula: C₂₁H₂₂O₄

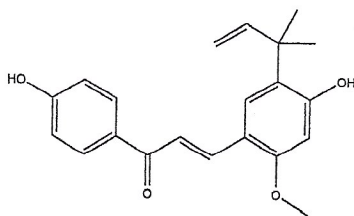
Molecular Weight: 338.40

Appearance: Orange powder

Water Content: 0.1%

Storage: Store in a cool, dry place

Purity(HPLC): 99.2%



Prepared by:
Ramesh Mandadi
Ramesh Mandadi
Director of Operations

Reviewed and Approved by:
Sujata Moton
Sujata Moton
VP



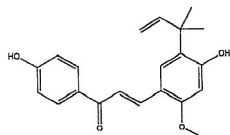
INDOFINE Chemical Company, Inc.

121 Stryker Lane, Bldg. 30, Suite 1 • Hillsborough, NJ 08844 • U.S.A.

Phone: (908) 359-6778 • FAX: (908) 359-1179

website: www.indofinechemical.com

e-mail: chemical@indofinechemical.com



HPLC ANALYSIS

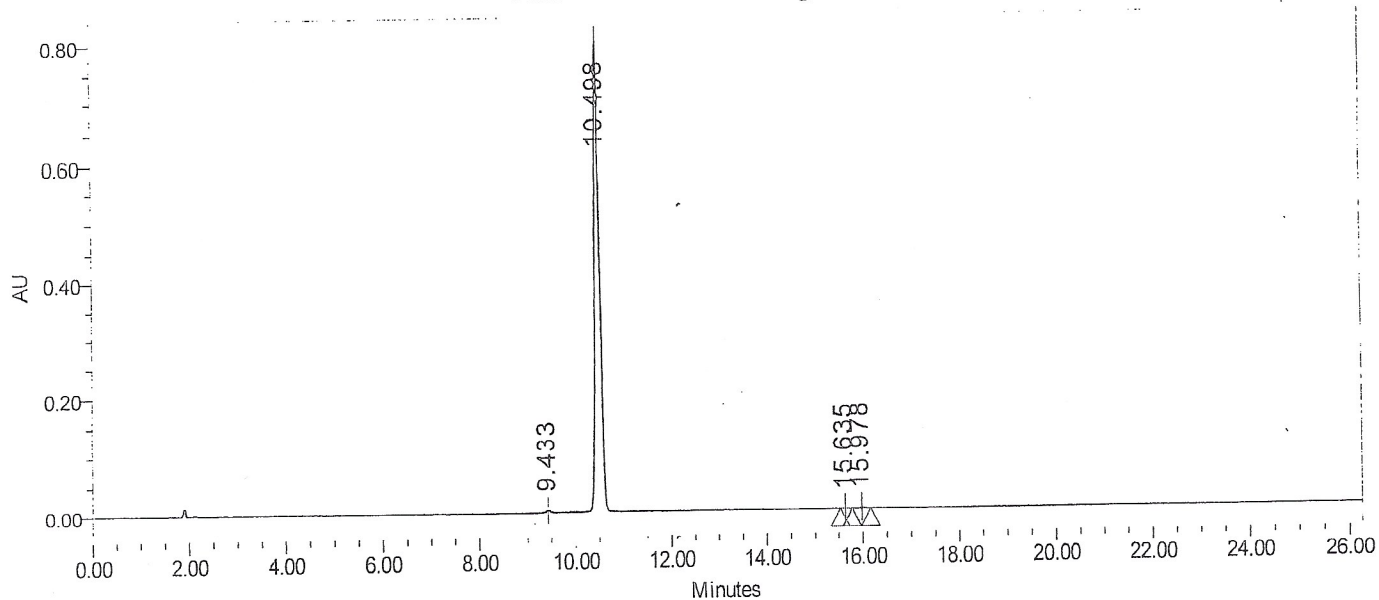
Catalog No.: 06-805
Product Name: Licochalcone A
Lot No.: 2208694

SAMPLE INFORMATION

Sample Name: Licochalcone A
Sample Type: Unknown
Vial: 9
Injection #: 1
Injection Volume: 10.00 ul
Run Time: 30.0 Minutes

Acquired By:
Sample Set Name
Acq. Method Set: Licochalcone A
Processing Method: sample
Channel Name: PDA Ch1 372nm@4.8nm
Proc. Chnl. Desc.: PDA Ch1 372nm@4.8nm

Auto-Scaled Chromatogram



Peak Results

Name	RT	Area	% Area	Height (μV)	USP Plate Count	USP Resolution
1	9.433	26823	0.45	3829	41661.73	
2	10.498	5943925	99.21	802663	46364.78	5.54
3	15.635	2835	0.05	394	42486.87	27.04
4	15.978	17836	0.30	2051	91794.14	1.67